



IMPLANTAÇÃO A - 1:750



IMPLANTAÇÃO B - 1:750

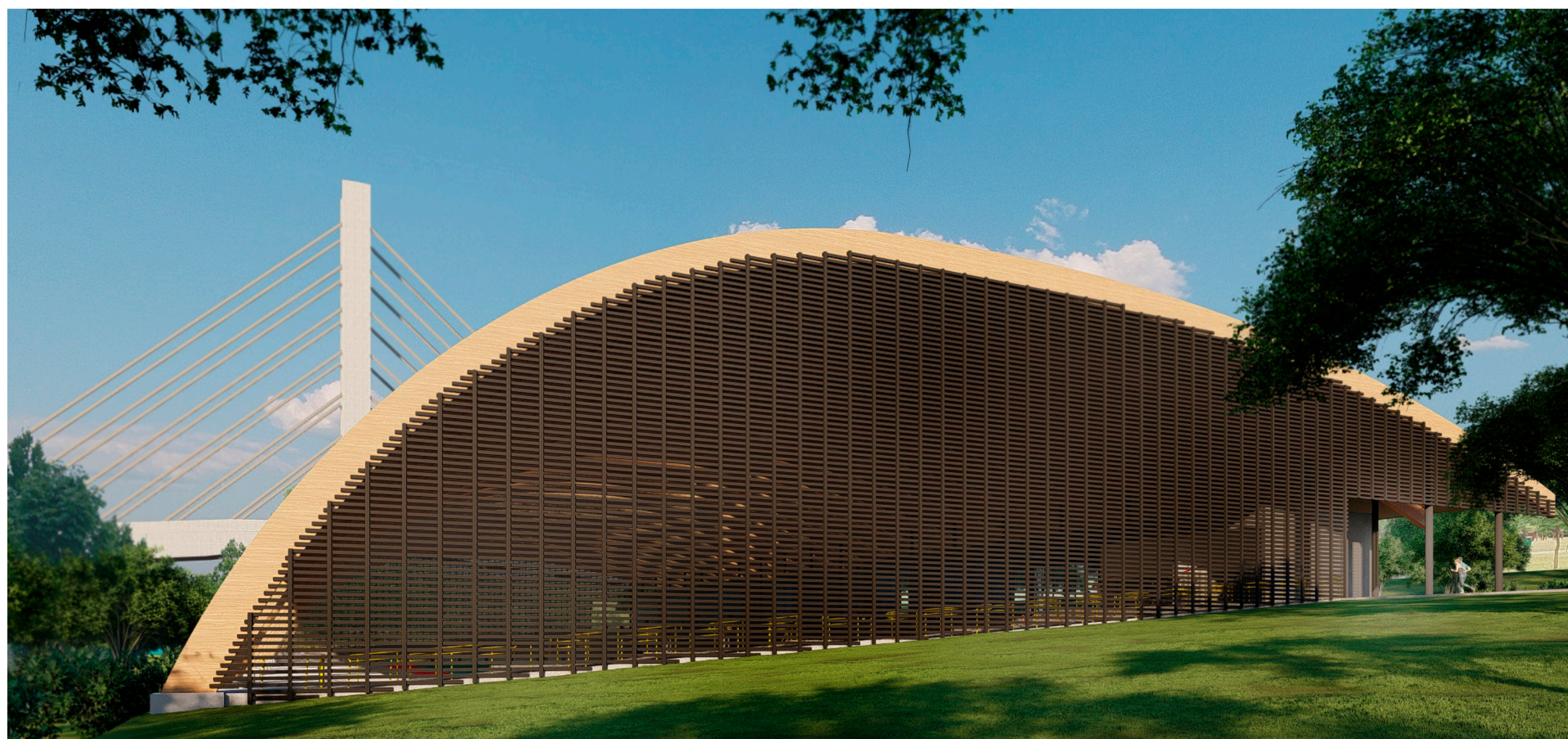


IMAGEM 1

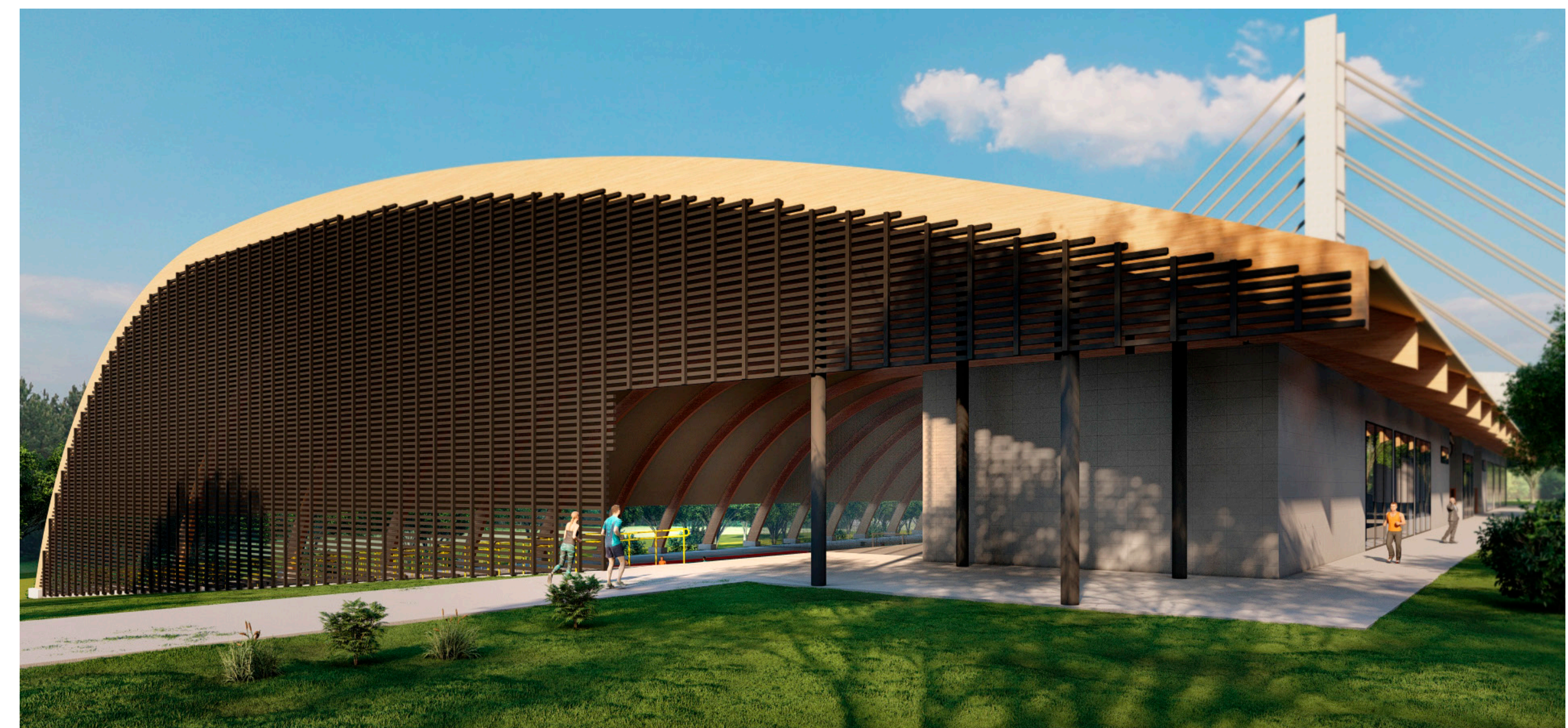
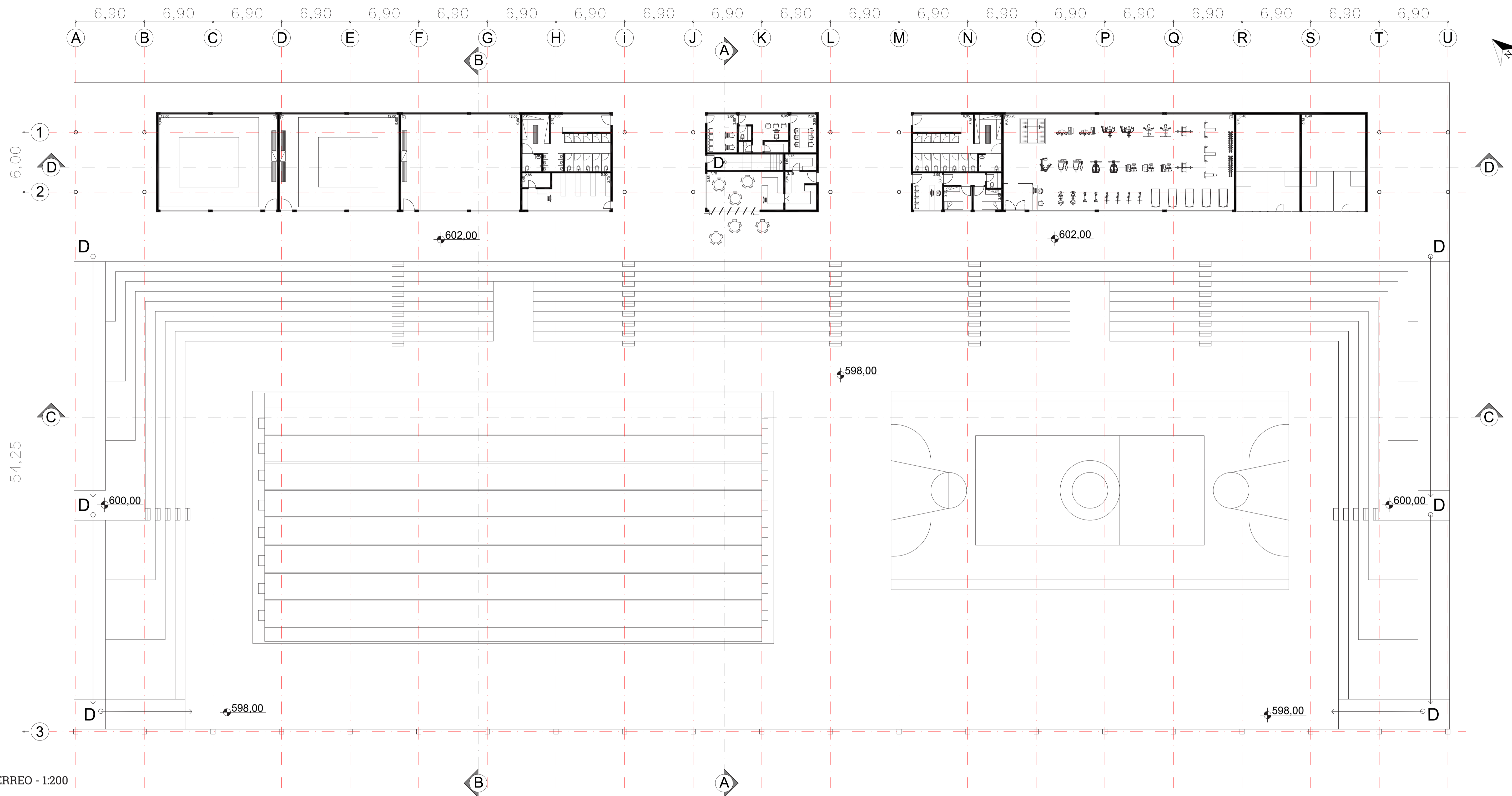
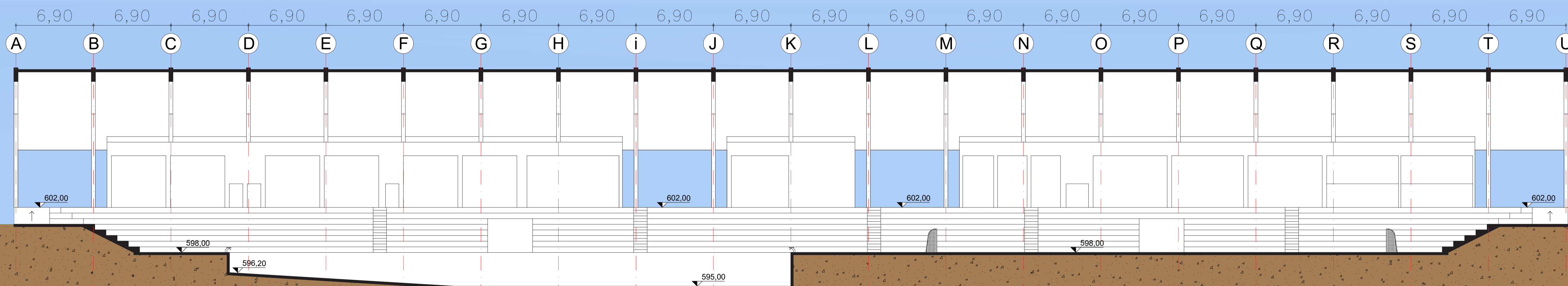


IMAGEM 2

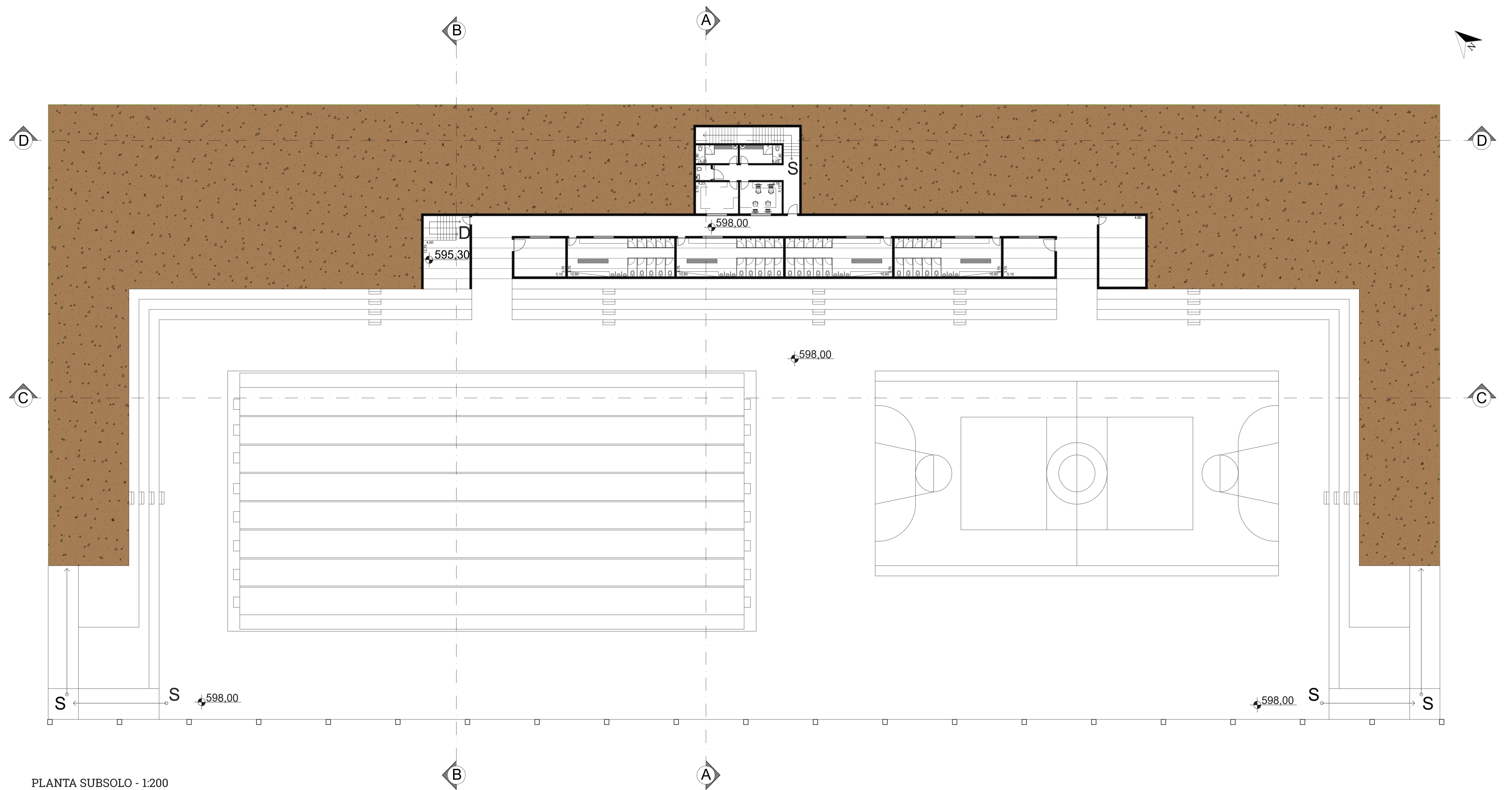




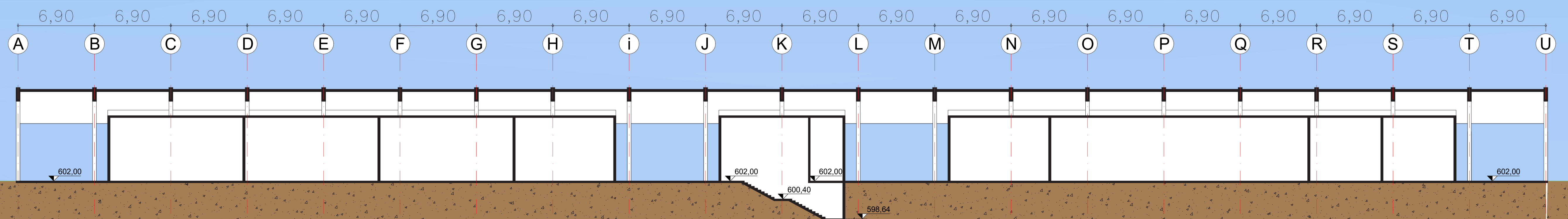
PLANTA TÉRREO - 1:200



CORTE CC - 1:200



PLANTA SUBSOLO - 1:200



CORTE DD - 1:200



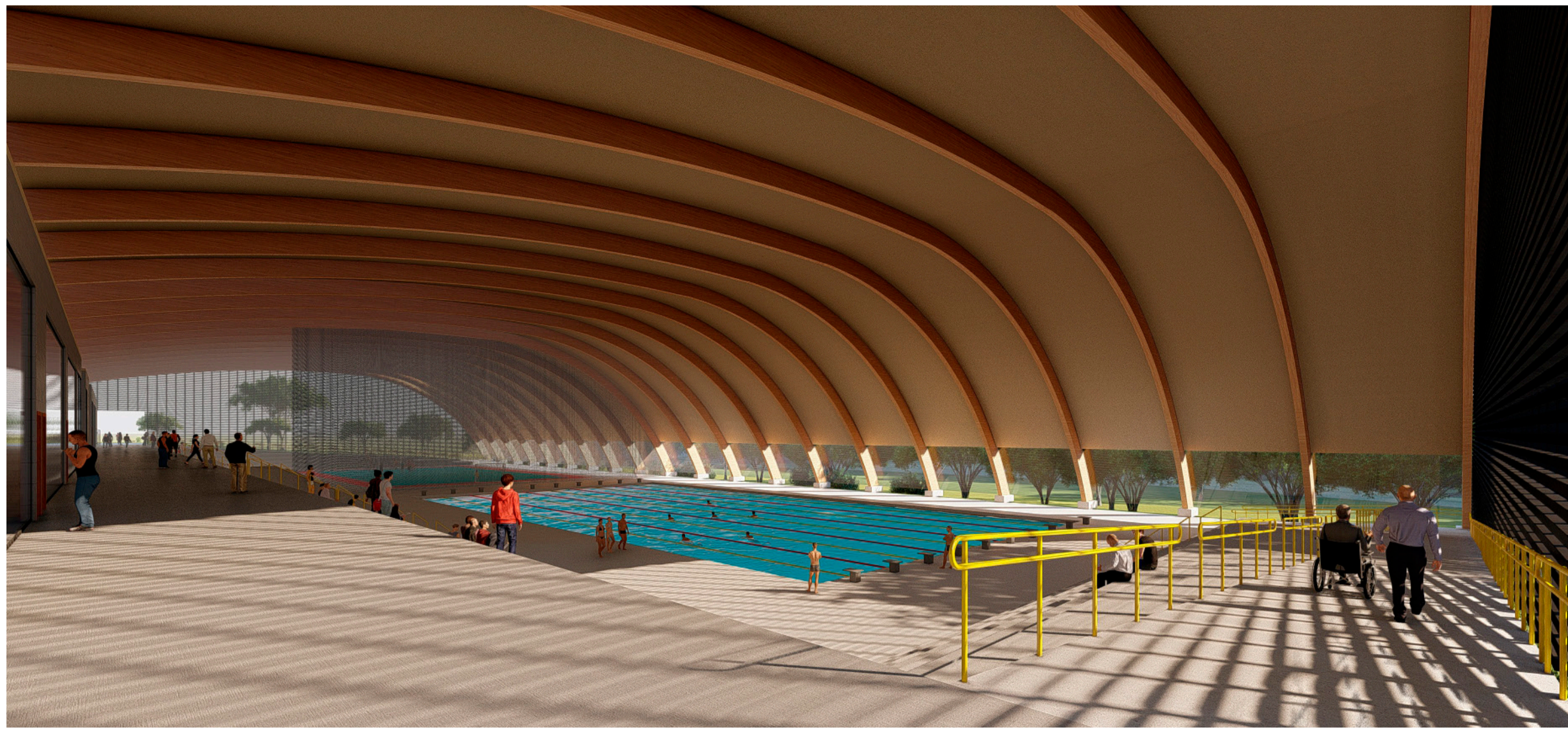
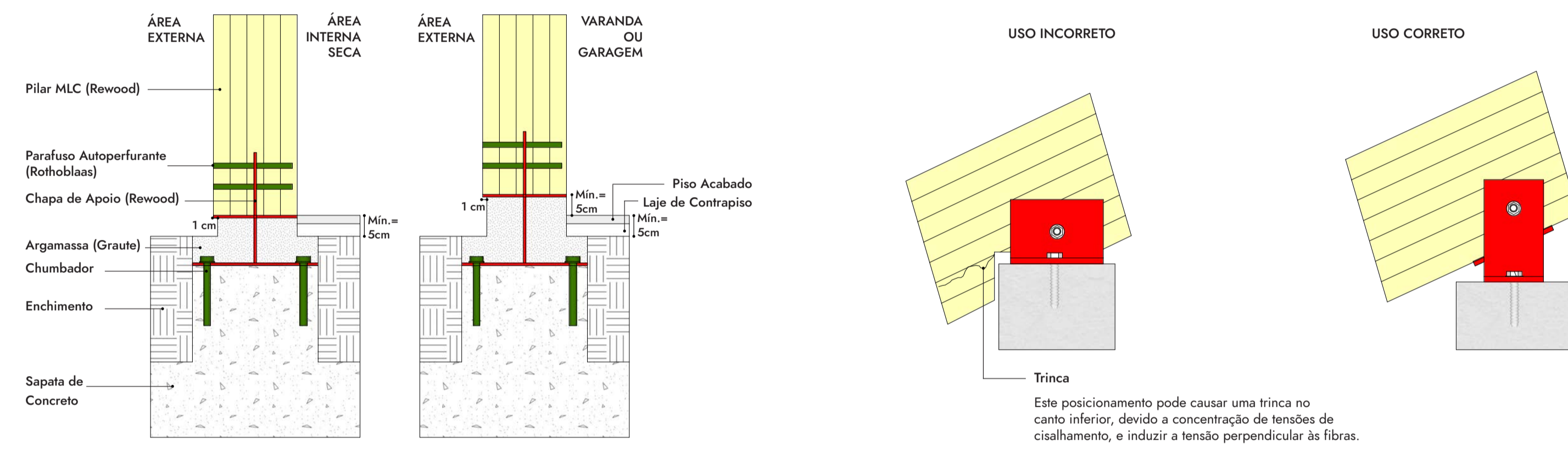


IMAGEM 3

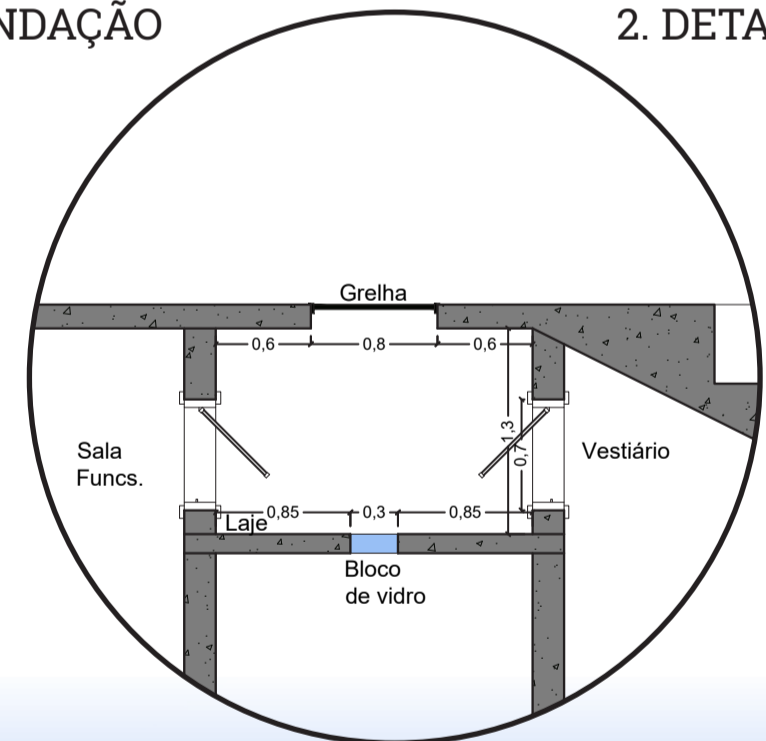


IMAGEM 4

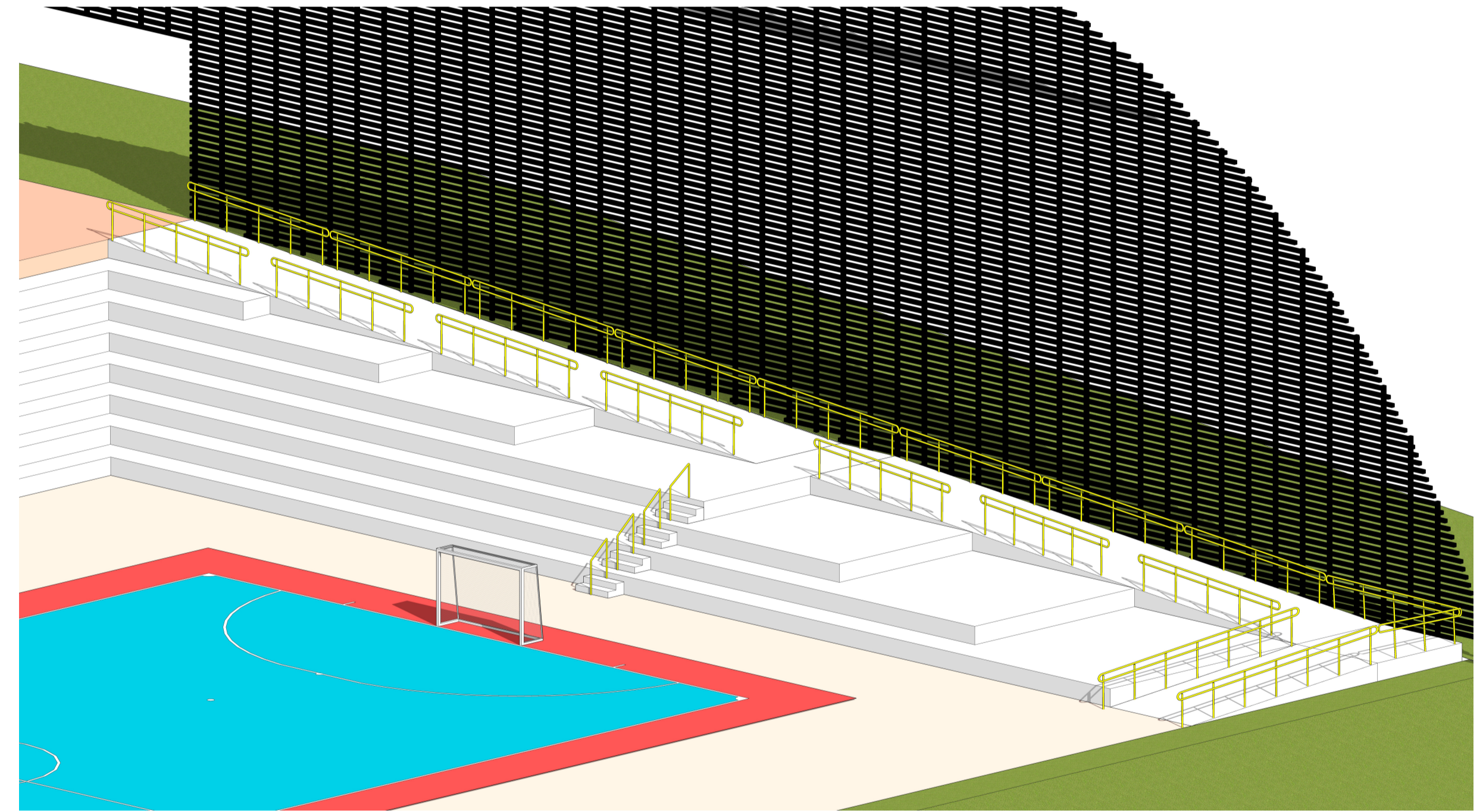


1. DETALHAMENTO FIXAÇÃO DA VIGA MLC COM FUNDAÇÃO

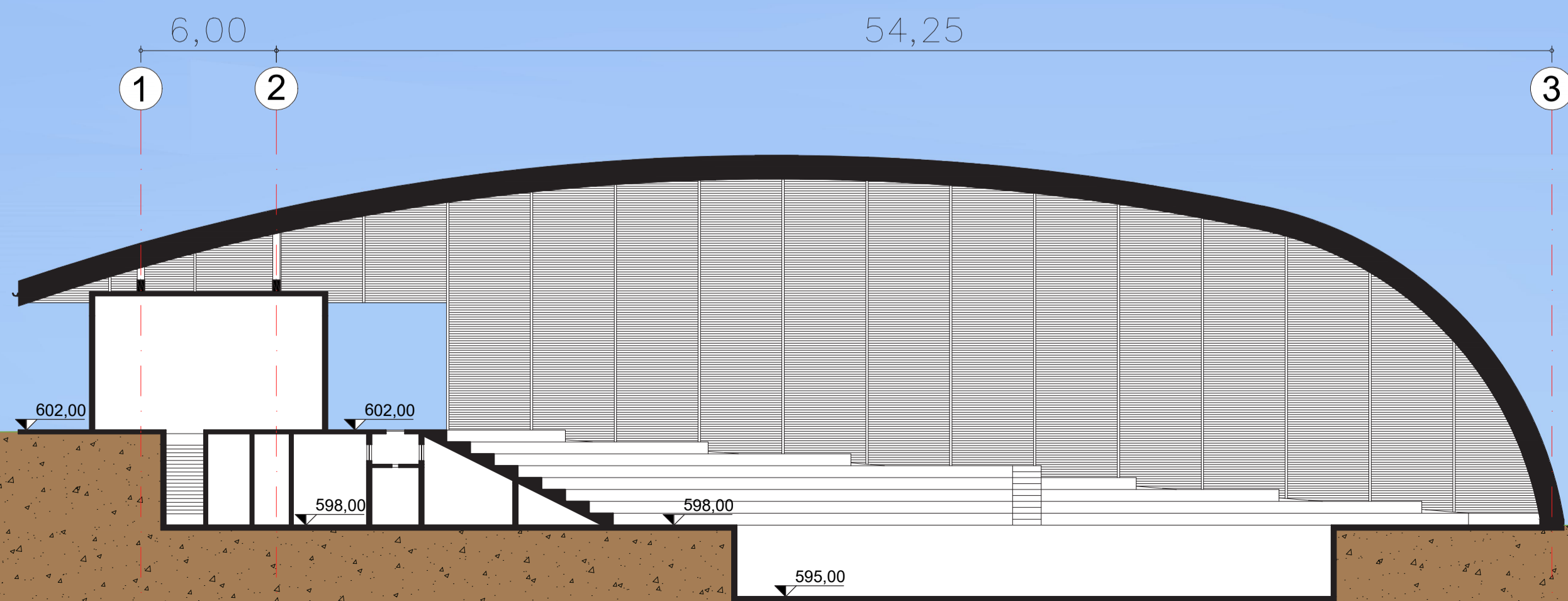
2. DETALHAMENTO FIXAÇÃO DA VIGA MLC COM PILAR



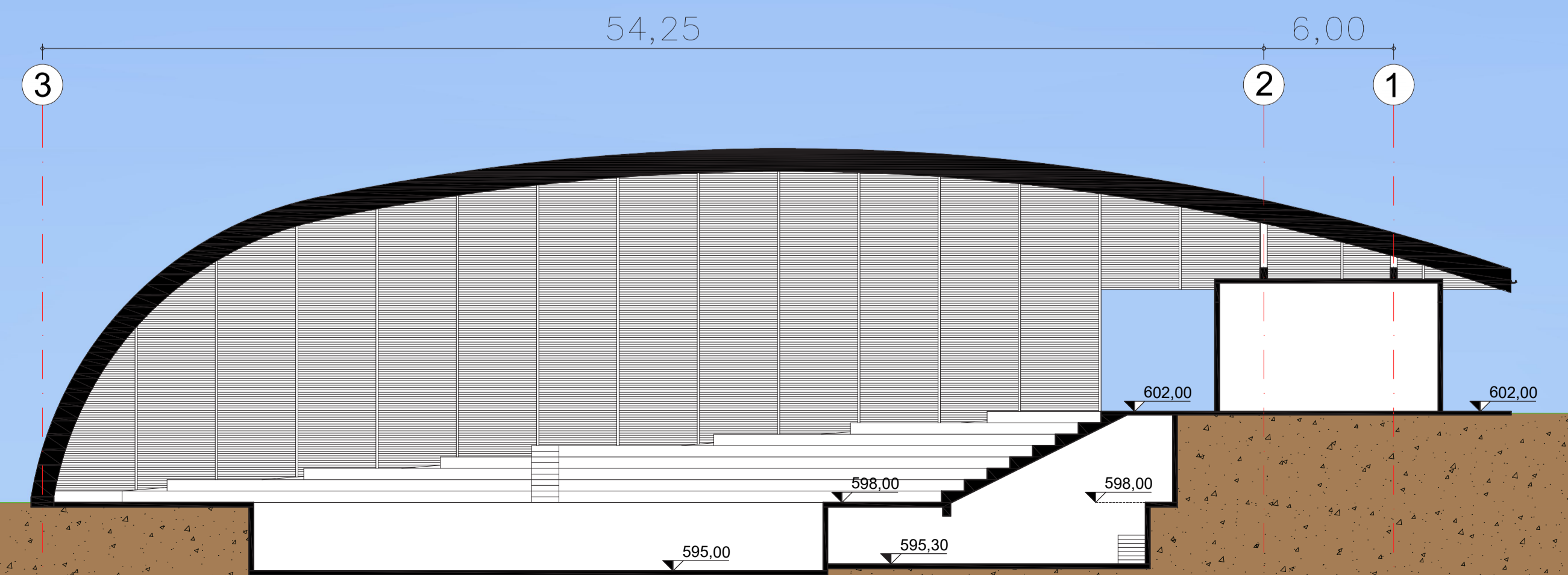
3. DETALHAMENTO CORREDOR SUBSOLO



4. RAMPA DE ACESSO AO SUBSOLO



CORTE AA - 1:200



CORTE BB - 1:200